

Figure 1 Profile release of IL-1 β (A) and TNF- α (B) in THP-1 model. LPS is the positive control (inflamed macrophages), Formulation refers to healthy macrophages treated with ULTRASOL™ curcumin, and Formulation + LPS regards inflamed macrophages treated with formulation.

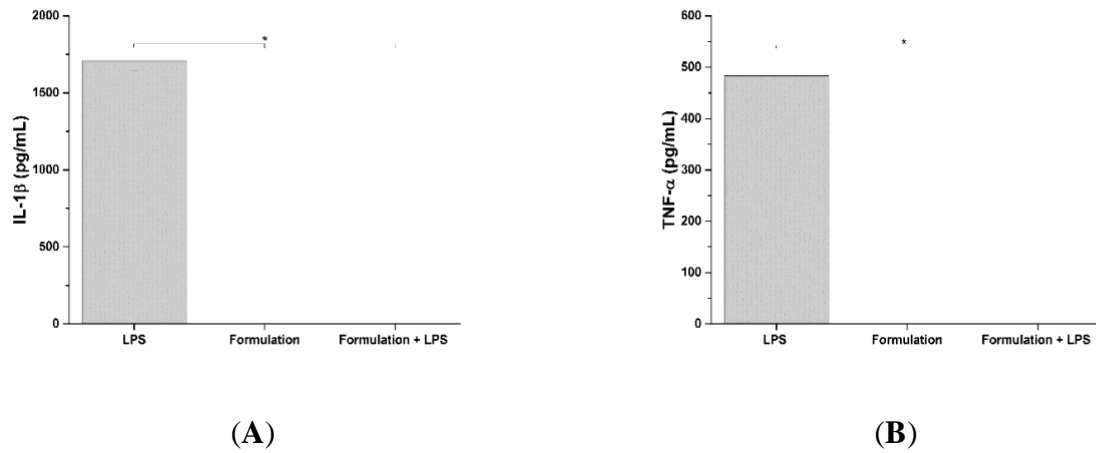


Figure 2 COX 1-2 total activity (A) and COX-2 specific activity (B) in inflamed and untreated THP-1 cells (LPS) and ULTRASOL™ curcumin-treated cells (Formulation + LPS).

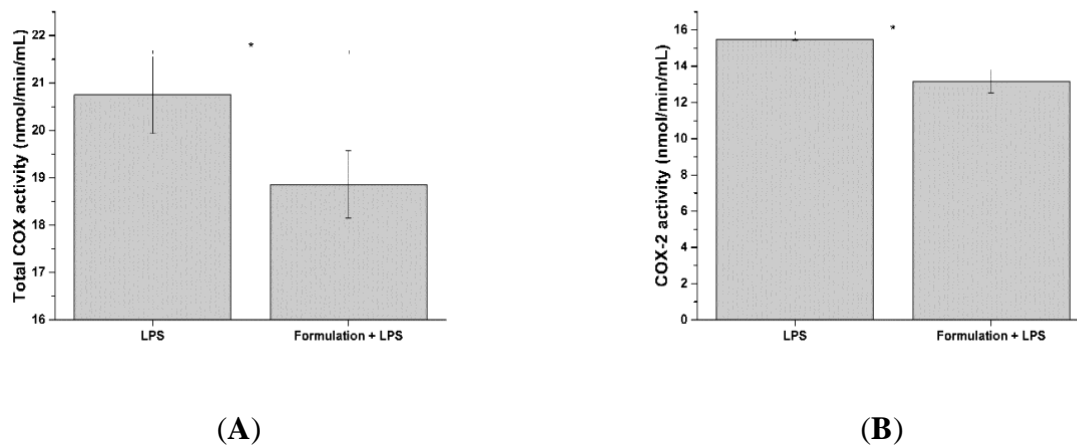


Figure 3 Non-inflamed and healthy THP-1 cells (A), inflamed THP-1 cells treated with ULTRASOL™ curcumin (B), inflamed THP-1 cells. Cells treated with the formulation present same morphology as healthy ones.

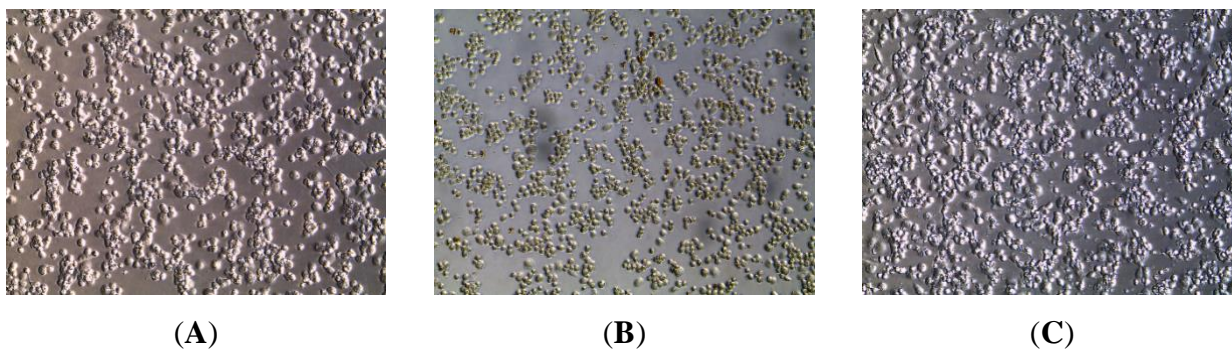


Figure 4 Profile release of IL-1 β (A) and TNF- α (B) in the prostate model. CM is the positive control (inflamed model), Formulation refers to healthy LNCaP cells treated with the formulation, and Formulation + CM regards inflamed LNCaP cells treated with ULTRASOL™ curcumin.

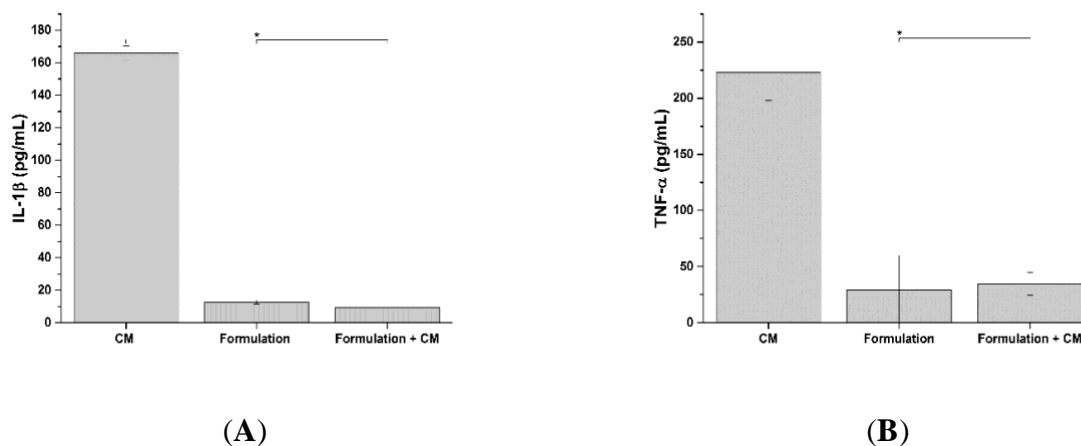


Figure 5 COX 1-2 total activity (A) and COX-2 specific activity (B) in inflamed and untreated LNCaP cells (CM) and ULTRASOL® curcumin-treated cells (Formulation + CM).

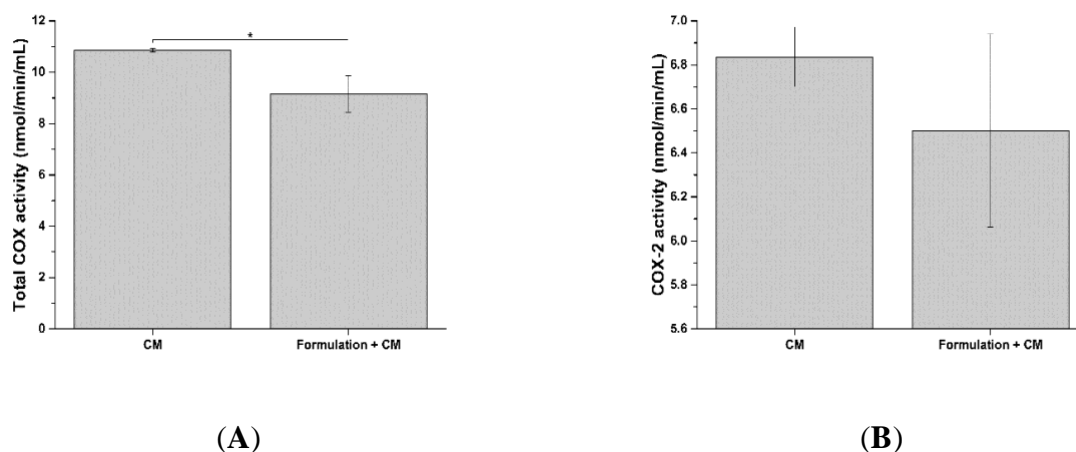


Figure 6 Non-inflamed and healthy LNCaP cells (A), inflamed LNCaP cells after ULTRASOL™ curcumin treatment (B), and inflamed cells. ULTRASOL™ curcumin-treated cells present same morphology as healthy ones.

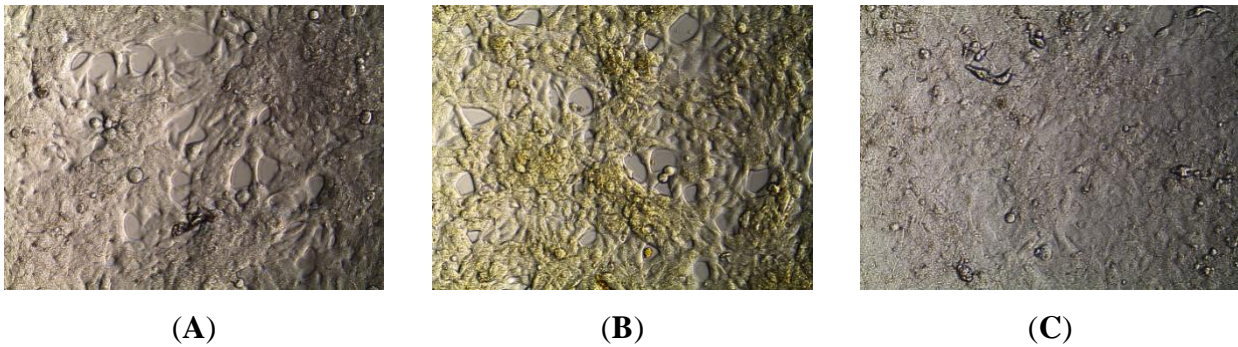


Figure 7 Cell viability (A) and apparent permeability (P_{app}) (B) of intestinal epithelium exposed to digestive fluids and digested ULTRASOL™ curcumin respectively.

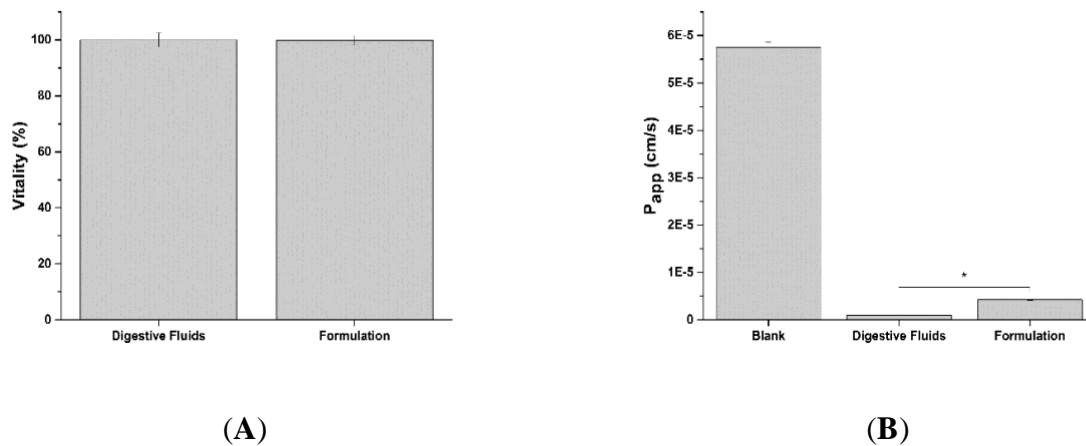


Figure 8 Profile release of IL-1 β (A) and TNF- α (B) in inflamed macrophages. LPS is the positive control (inflamed macrophages), Formulation refers to healthy THP-1 cells, and Formulation + LPS regards inflamed cells treated with the bioavailable fraction.

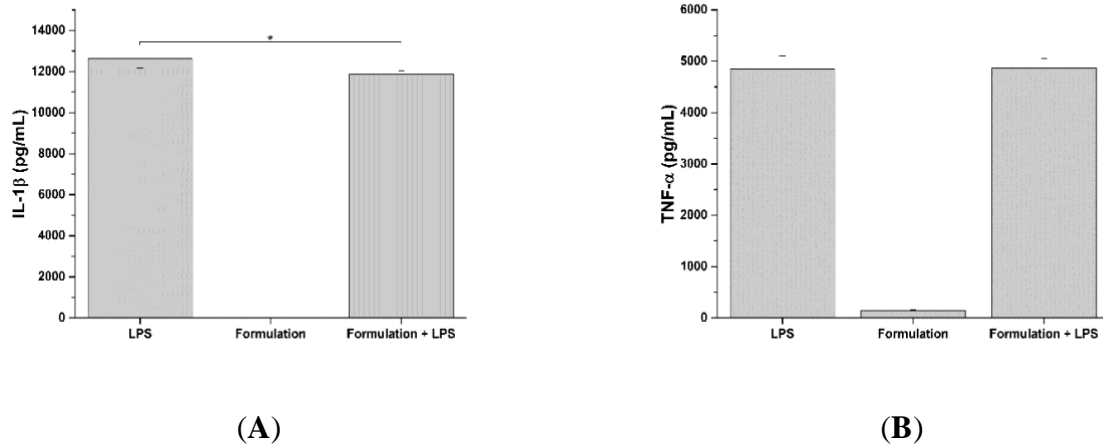


Figure 9 Total COX activity in inflamed macrophages (LPS) and cells treated with ULTRASOL™ curcumin (Formulation + LPS).

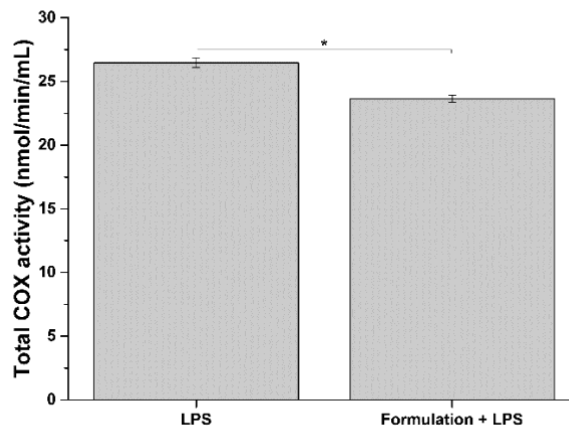
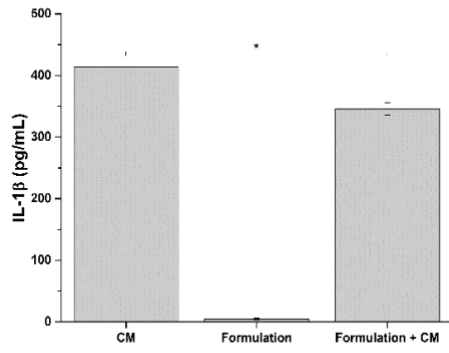
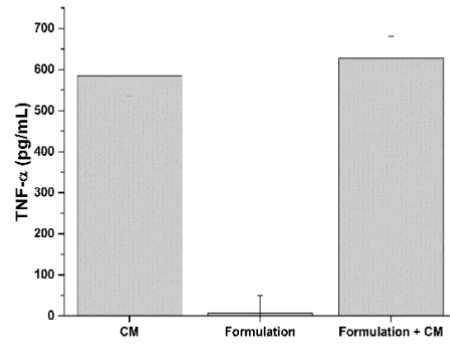


Figure 10 Profile release of IL-1 β (A) and TNF- α (B) in inflamed LNCaP. CM is the positive control (inflamed model), Formulation refers to healthy cells, and Formulation + CM regards inflamed cells treated with the bioavailable fraction.



(A)



(B)

Figure 11 Contribution of COX-2 activity in inducing total COX activity in inflamed LNCaP cells (CM) and inflamed LNCaP cells treated with the bioavailable fraction (Formulation + CM).

